



166 Manor Park Road
Harlesden
London
NW10 4JT
T: 020 8965 2250
E: sales@mathesonsestates.com
www.mathesonsestates.com



West End Close, London NW10 8LP £310,000 Leasehold



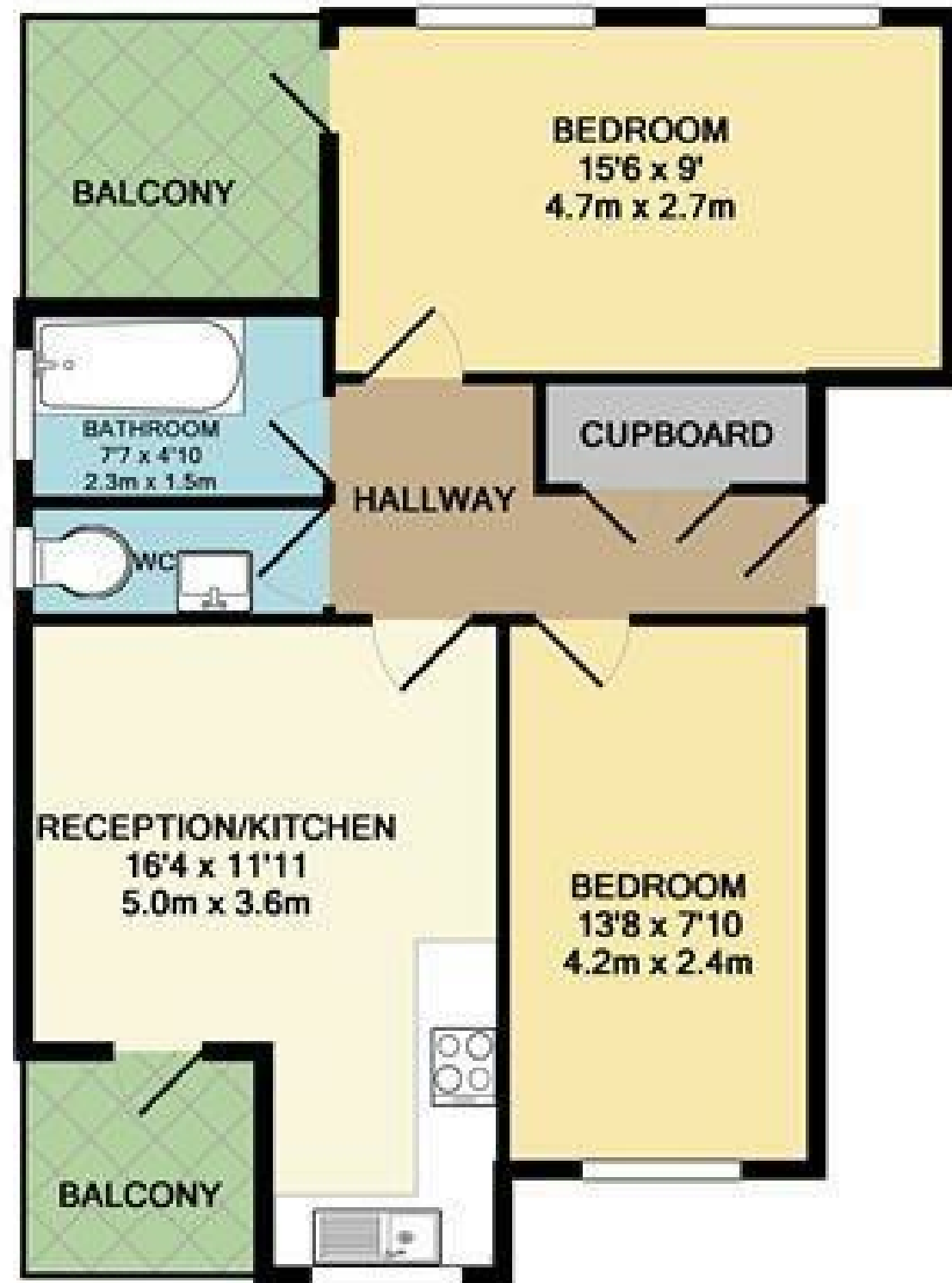
Whilst every effort is made to give a fair description, the accuracy of these particulars is not guaranteed, neither do they constitute an offer or contract.

MATHESONS ESTATE AGENTS have not tested any apparatus, equipment, fitting or services and so cannot verify that they are in working order. The buyer is advised to obtain verification from their solicitor or surveyor. Measurements are correct to within +/- 6 A sonic tape is used. None of the statements contained in these particulars or any of our properties are to be relied upon as a representation of fact.

KEY FEATURES:

- 2 DOUBLE BEDROOM APARTMENT
- Two good size bedrooms
- Bright open plan reception/kitchen area
- Fitted bathroom separate WC
- Balcony
- Off street parking
- Entry phone system
- LEASEHOLD

Two double bedroom apartment set within a modern development. The property benefits from two good size bedrooms, bright open plan reception and kitchen area with access to balcony, fitted bathroom, separate WC, entry phone system, off street parking. Located within close proximity to school, shops & amenities, bus routes on Hillside. Nearest tube is Harlesden Station (Bakerloo Line, London Overground). Ideal for a first time buyer or buy to let investment



Whilst every attempt has been made to ensure the accuracy of the floor plan contained here, measurements of doors, windows, rooms and any other items are approximate and no responsibility is taken for any error, omission, or mis-statement. This plan is for illustrative purposes only and should be used as such by any prospective purchaser. The services, systems and appliances shown have not been tested and no guarantee as to their operability or efficiency can be given.
Made with Metropix ©2015